



TECHNICAL CHARACTERISTICS

This innovative proposal presents a perimeter enclosure solution, characterized by its simplicity and robustness. It consists of 20 mm panels composed of aluminum frames assembled discreetly, without visible screws. These panels frame various types of blinds, which can be mobile or fixed, and can be fitted with or without textiles such as mosquito nets or sun protection mesh.

To ensure functionality, the louvered panels are sliding and move on rails equipped with anodized or painted aluminum profiles. They are especially recommended for use as space dividers in structures such as pergolas, adapting to both residential and commercial environments, such as homes, businesses, restaurants, hotels, and institutional facilities.

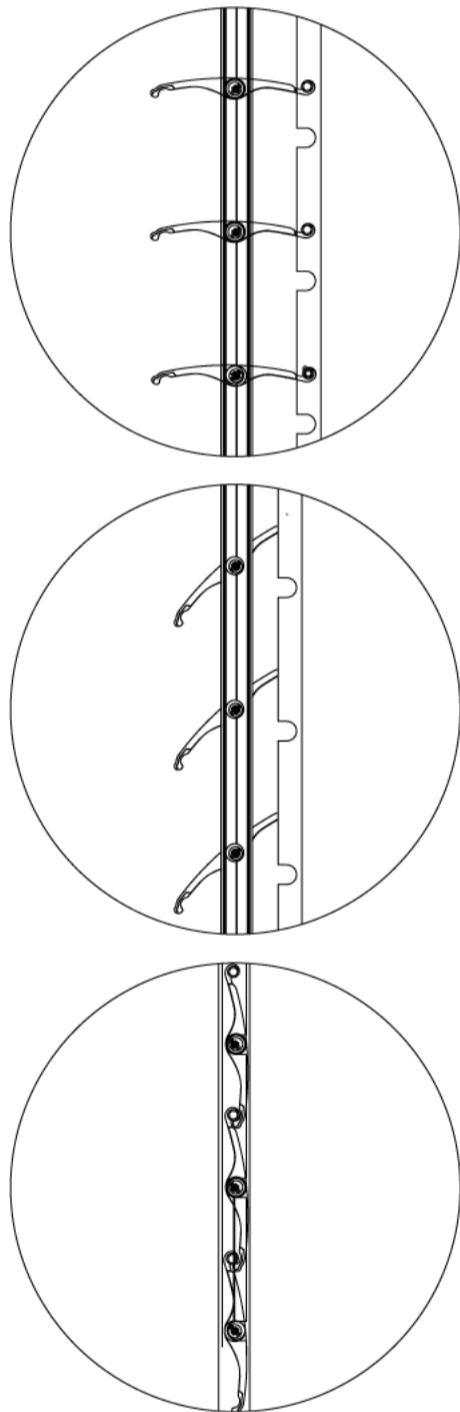
The system's operation involves sliding the panels longitudinally on aluminum rails. This sliding action makes it possible to convert an outdoor space into an indoor one, as well as vice versa. A highlight is our modular profile system, which facilitates extending rails and adding more panels according to the required dimensions. This adaptable system can operate in wall-to-wall or wall-to-panel configurations.



MOBILE PANELS



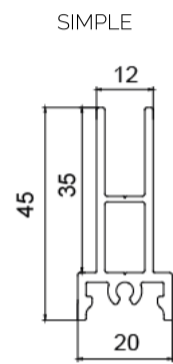
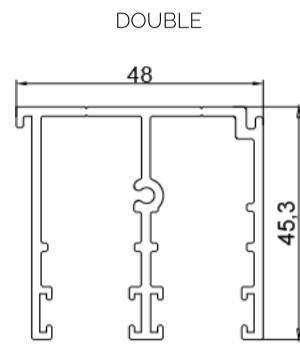
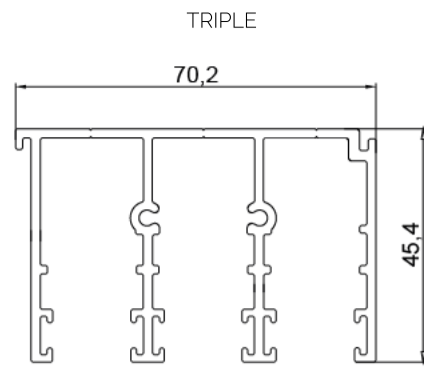
Before sliding the 20 mm thick panels with a maximum height of 3.00 m by 1.200 m wide, they must be closed and locked by a sophisticated ratchet mechanism actuated by a spring and an eccentric shaft in stainless steel. All shafts and hardware are made of stainless steel and without visible screws and are easy to remove and replace and to transport and store due to their size and weight in case of a hurricane warning without having to require an expert.



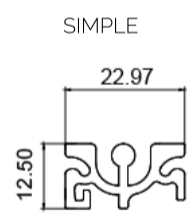
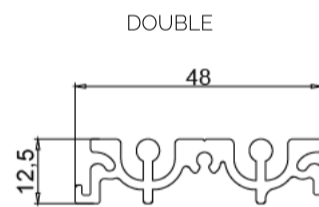
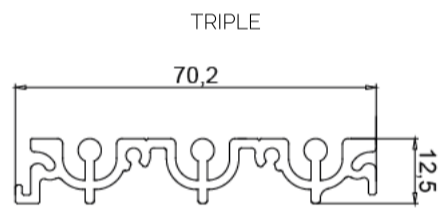


MAIN PROFILES

SUPERIOR GUIDES



LOWER GUIDES

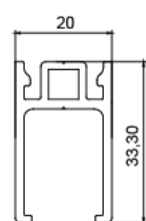


FLAP FLOOR PROFILE

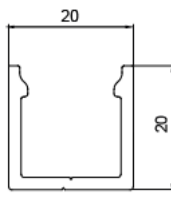


MAIN FRAMEWORK

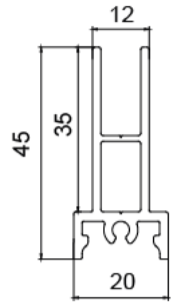
ROLLER SUPPORT PROFILE



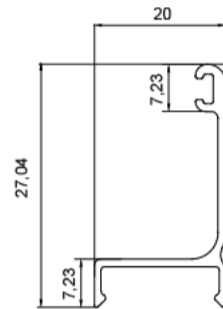
Slat frame profile



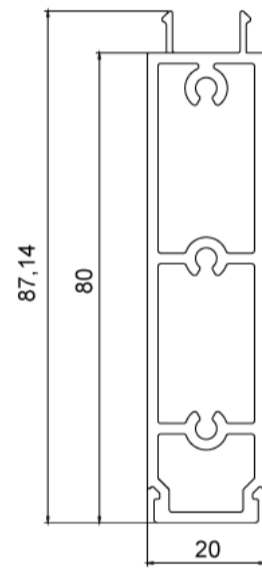
UPPER GUIDE PANEL



MOBILE FRAME FLAP



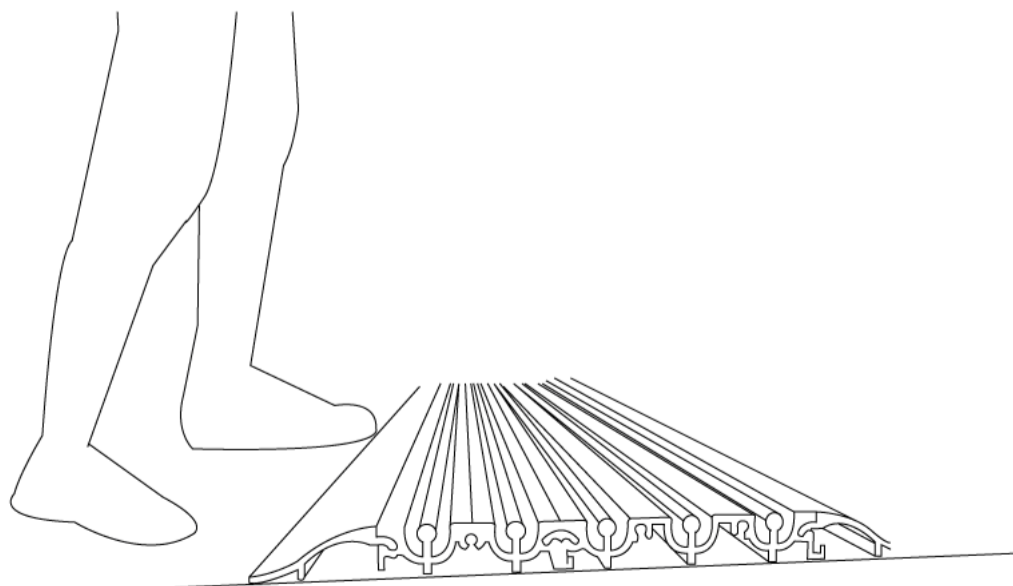
SLIDINGSCREEN FRAME PROFILE

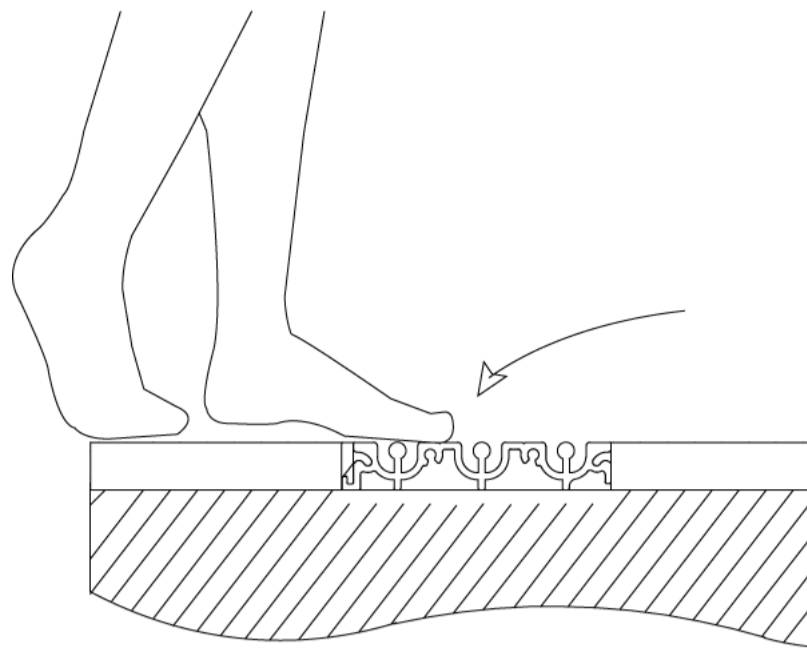


BENEFITS

Our movable blind system consists of slats made of extruded aluminum with a curved shape. When closed, these slats fit together, creating excellent sunlight, water, and wind tightness. Perimeter tolerances are less than 1 mm and are imperceptible to the human eye, providing a blackout screen. When opened, the slats, which are 10 cm high, offer complete, perfect visibility without contamination.

Thanks to its innovative design, the rail allows you to walk barefoot on it without any discomfort or pain; it's like walking on a tile.





WATER RESISTANCE: CLASS 2A



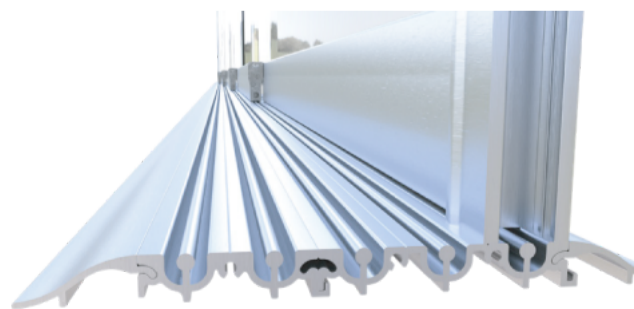
WIND RESISTANCE 80Km/h



EASY MAINTENANCE

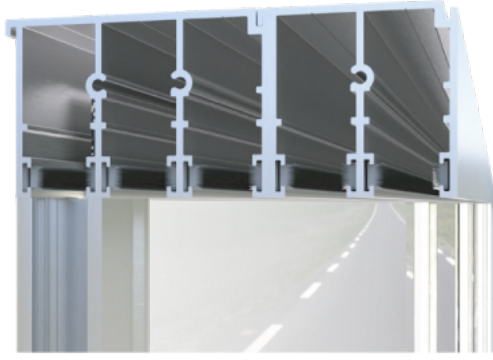
- In commercial premises, it provides a better view, opening completely to the public, creating a seamless transition between the street or hallways and the store.
- In offices, it allows you to optimize work areas, divide interior spaces, and modify the layout and size of your business's rooms.
- Meeting rooms, offices and leisure areas can be created.
- In businesses, optimize usable space and make terraces profitable by making them useful 365 days a year.
- Maintenance is minimal and thanks to its folding system, cleaning is very easy.
- The system can be embedded in the floor and allows for adjusting unevenness in the floor or ceiling of up to 20 mm.
- When closed, the panels fit together, giving the system greater strength and security.
- The entire weight of the system is on the floor, making it very versatile to install and requiring no ceiling reinforcements.

GENERAL CHARACTERISTICS



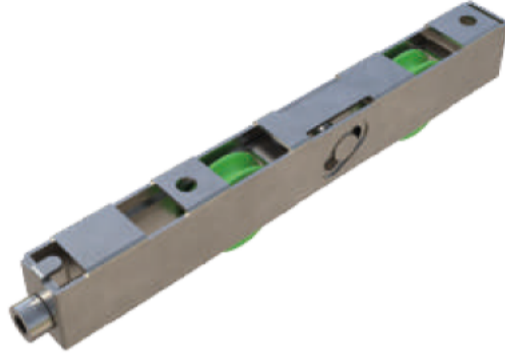
THE LOWEST PROFILE ON THE MARKET

The lower profile measures just 12.5 mm, making it the smallest on the market and capable of being fully embedded in the floor.



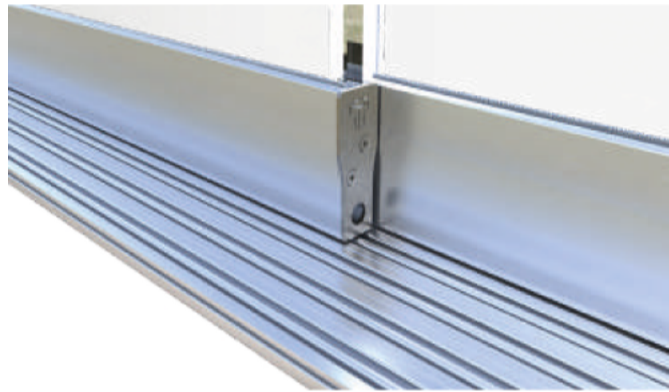
PROTECTS FROM WEATHER AND NOISE

The aluminum panels provide excellent watertightness, becoming a protective barrier against wind, rain, and dust.



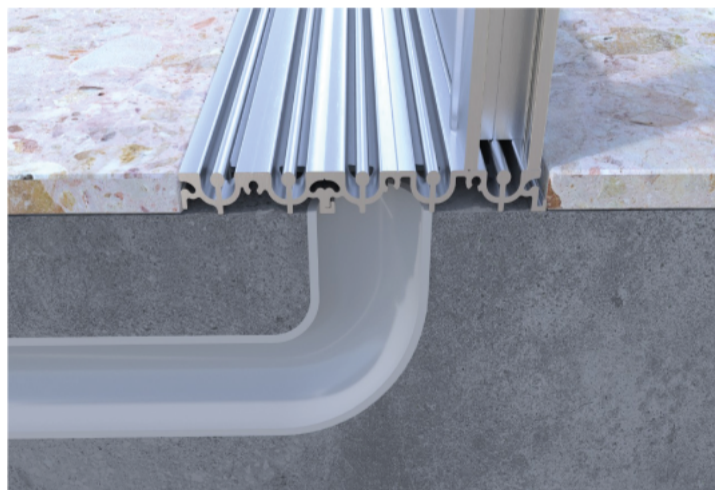
HIGHEST QUALITY CARS

The rolling carriages support glass weighing up to 100 kg.



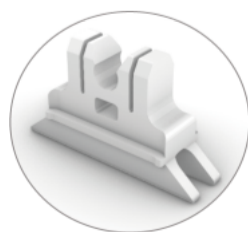
COMPENSATION CAPACITY

Upper compensation profile to accommodate working tolerances of up to 20 mm, even with the cabinet already assembled.



DRAIN INCLUDED

It has bottom drains to drain excess rain and surface water, making it easier to wash.

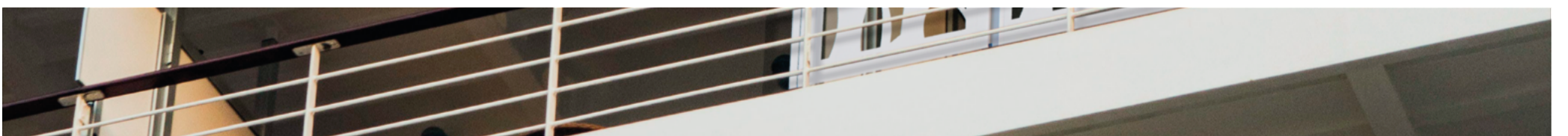


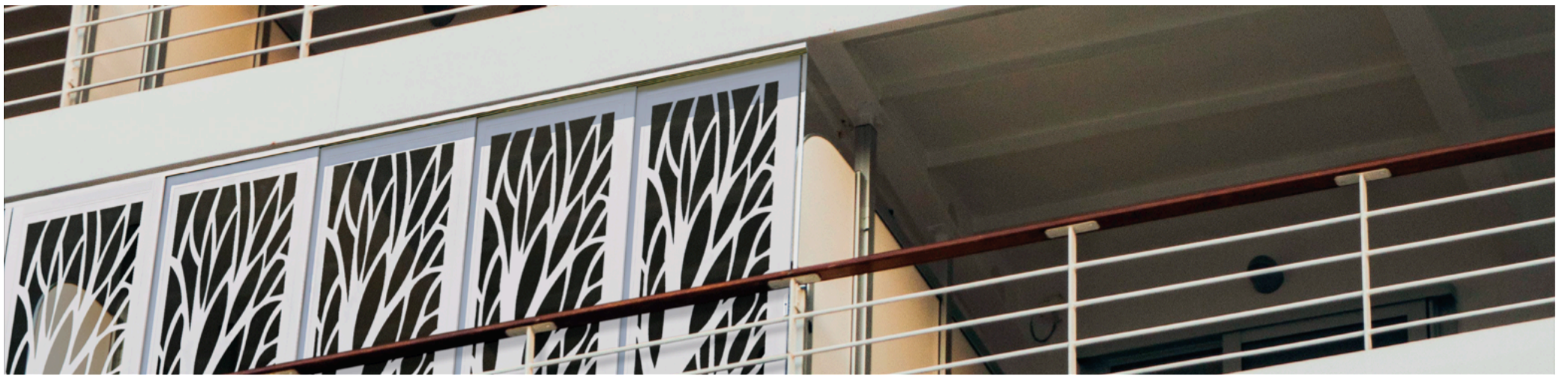
ANTISEISMIC AND STRONG WIND SAFETY

Slidingscreen has a sophisticated system that locks each of its panels, preventing them from coming loose in the event of an earthquake or strong winds present in certain areas.

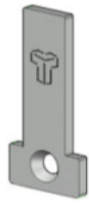


SLIDINGSCREEN HANDLE





COMPONENTS



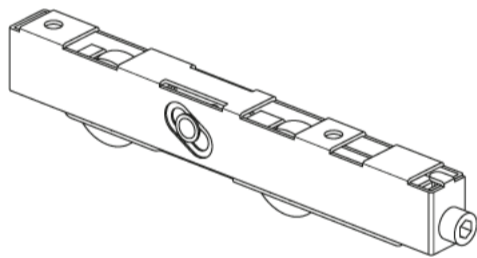
STAINLESS STEEL END CAP



STAINLESS STEEL DRAG END CAP



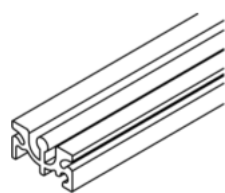
STAINLESS STEEL DISTANCE END CAP



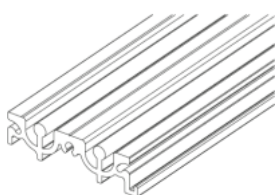
SKATE



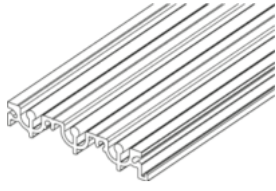
LOCK



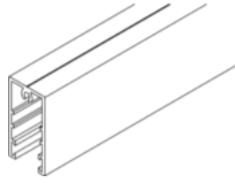
SINGLE LOWER PROFILE



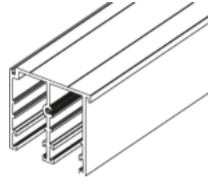
DOUBLE LOWER PROFILE



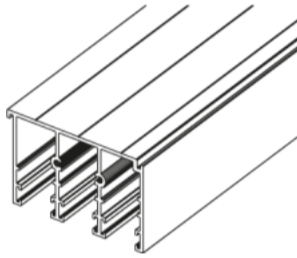
TRIPLE LOWER PROFILE



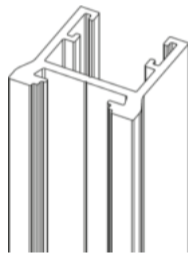
SINGLE TOP PROFILE



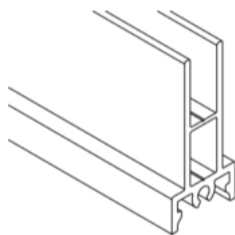
DOUBLE UPPER PROFILE



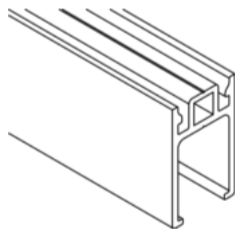
TRIPLE UPPER PROFILE



WALL PROFILE



TOP PROFILE SLIDING SCREEN



LOWER PROFILE SLIDING SCREEN

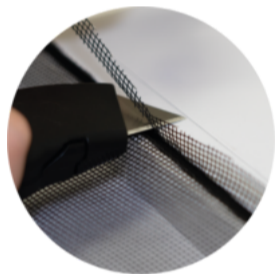
ACCESSORIES

SPLINE ROLLER KIT FOR MOSQUITO NET

This innovative kit features a grooved roller that applies perfect pressure to the vinyl that holds the screen between the aluminum frame, ensuring a hassle-free installation. It also features a specially designed hook to easily remove the old vinyl, making the renovation process even easier. At the opposite end of the roller, you'll find an integrated scalpel that allows you to precisely cut away any excess screen, ensuring a flawless finish. With the Spline Roller kit, you'll be prepared for any season and keep out pesky mosquitoes and midges.



Use the grooved roller to press the vinyl onto the aluminum frame and hold the screen in place.

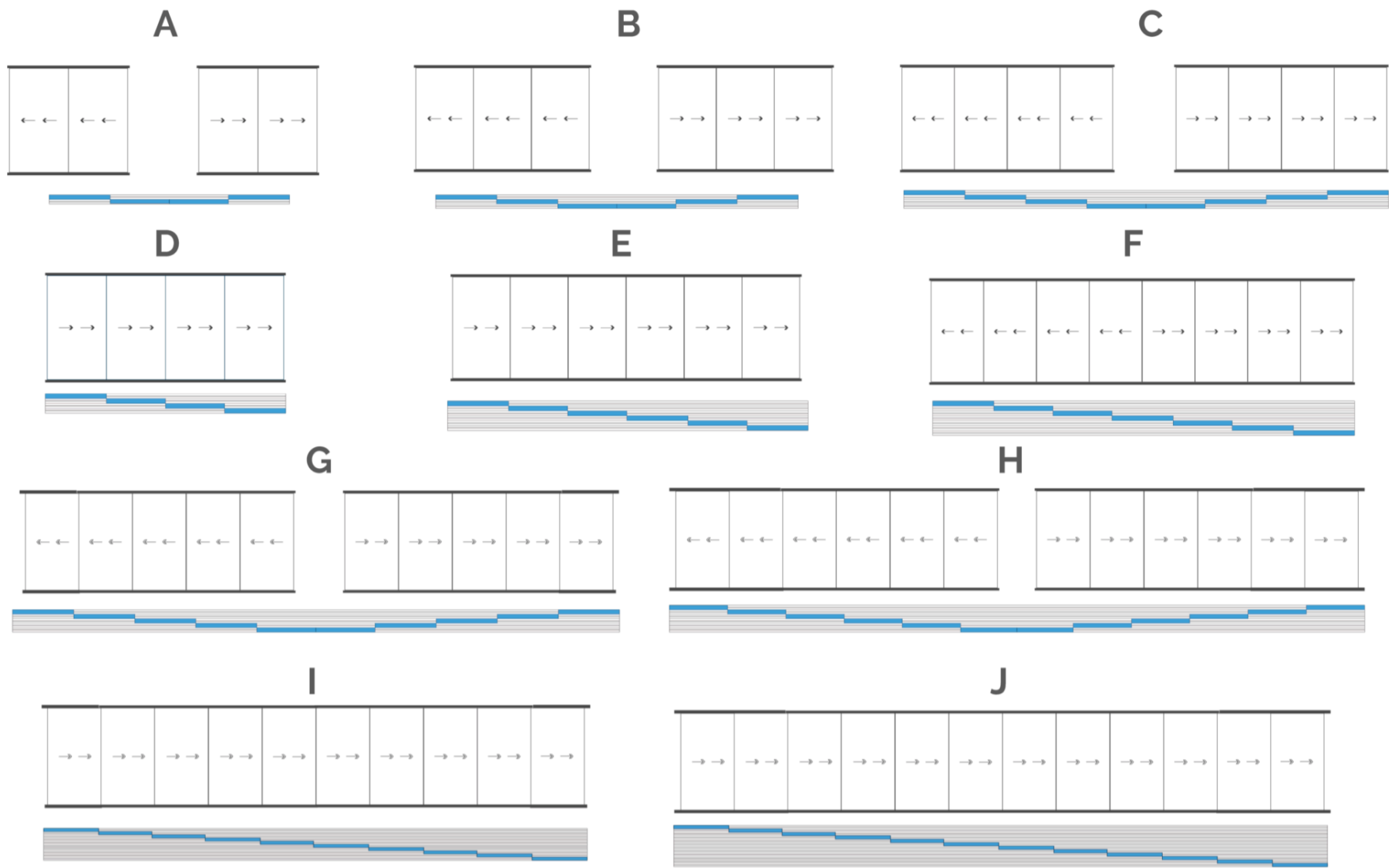


The cutter will be used to cut off the excess mosquito netting and/or vinyl.



With the punch you can remove the vinyl to perform mosquito net maintenance.

SETTINGS



A. 4 Panels, panel by panel.

B. 6 Panels, panel by panel.

C. 8 Panels, panel by panel.

D. 4 Panels, panel to wall.

E. 6 Panels, panel to wall.

F. 8 Panels, panel to wall.

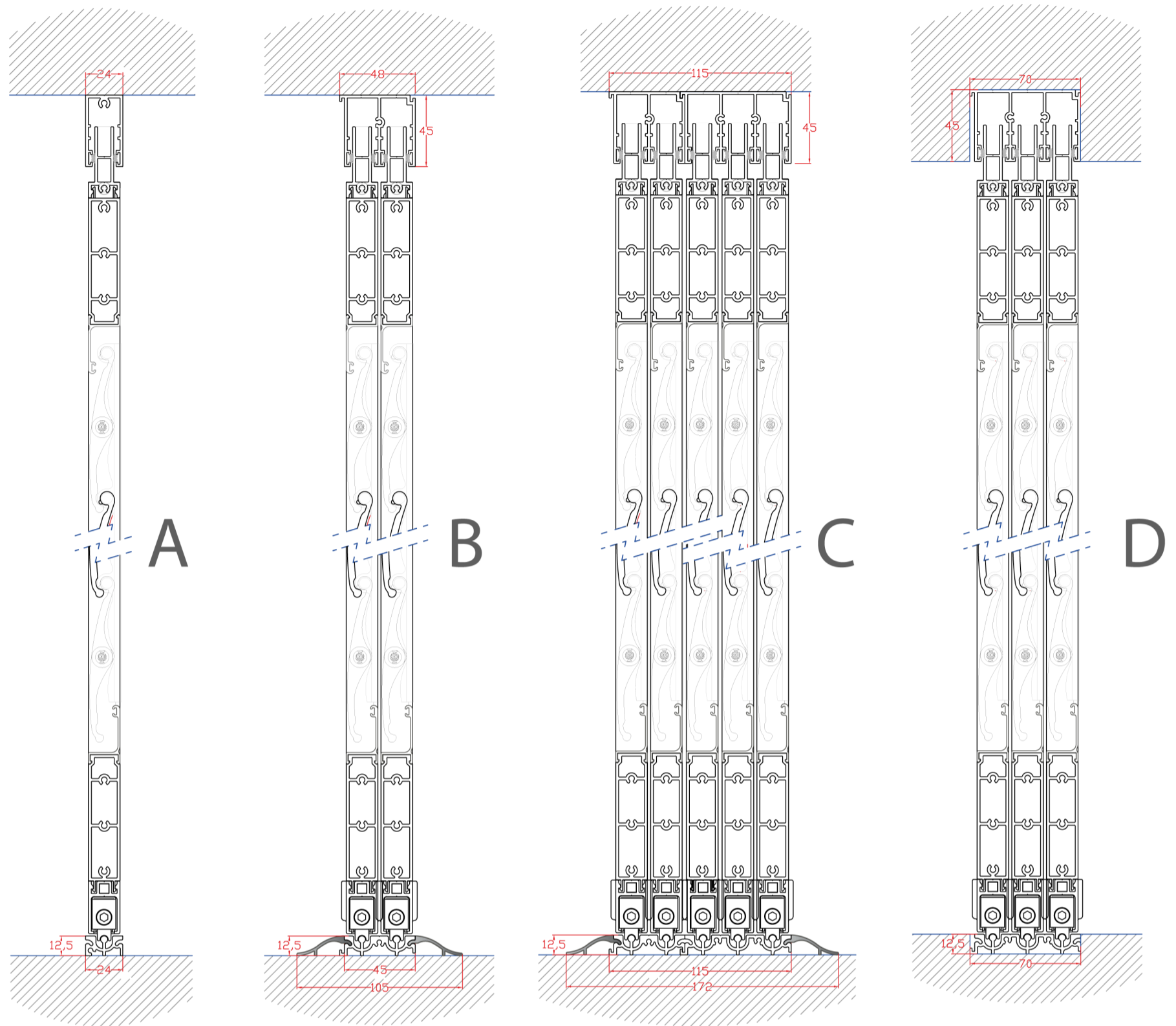
G. 10 Windows, window to window.

H. 12 Windows, window to window.

I. 10 Windows, window to wall.

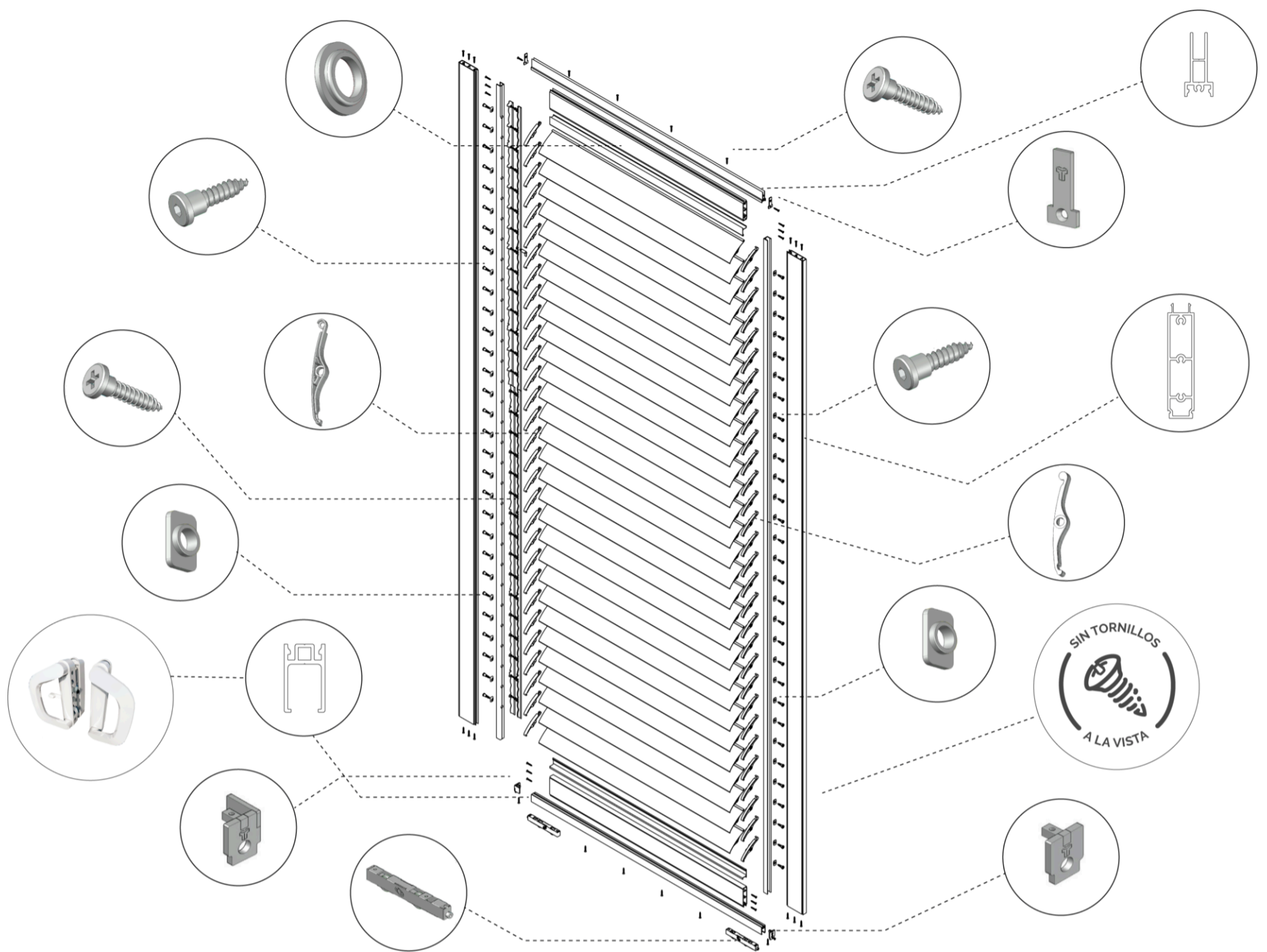
J. 12 Windows, window to wall.

RAIL CONFIGURATION



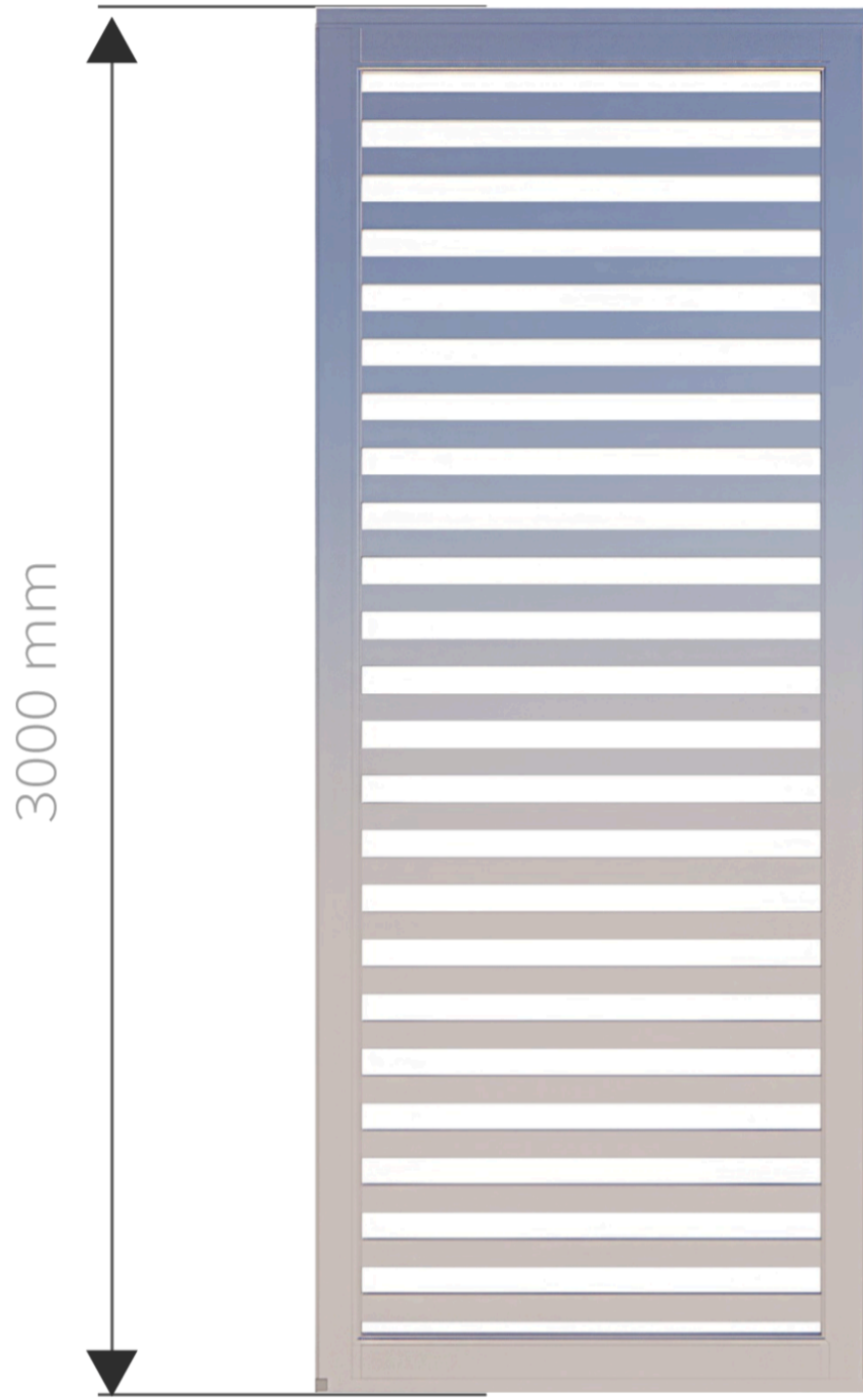
- A. 1 panel and 1 rail configuration.
- B. 2 panel and 2 rail configuration.
- C. 5-panel configuration, joining double and triple rails.
- D. 3 panel and 3 rail configuration.

PANEL EXPLOSION

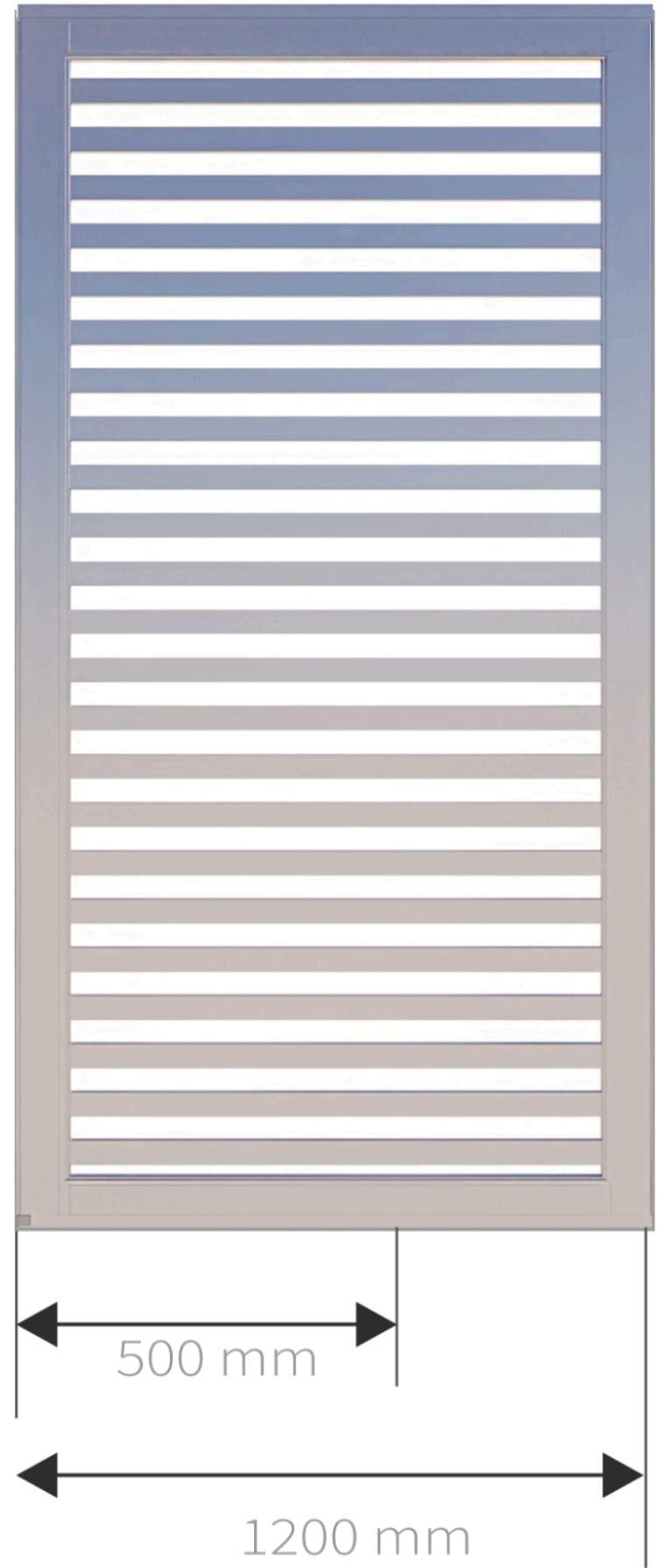


PANEL FEATURES

A



B



A. Maximum and minimum panel height

B. Maximum and minimum width of the panel.



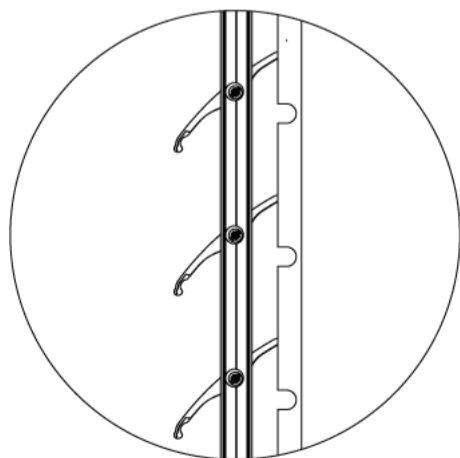
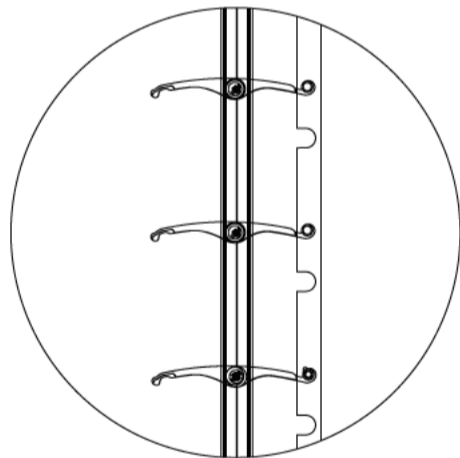
MOBILE ALUMINUM BLINDS

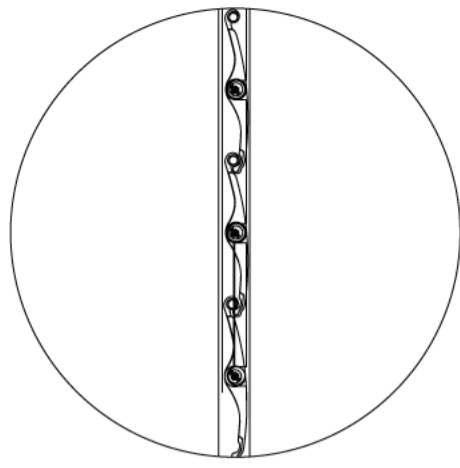
Our movable blind system is a testament to innovation. Its curved slats, made from extruded aluminum, ensure a precise closure that provides exceptional protection from sunlight, rain, and wind. Perimeter tolerances of less than 1 mm are invisible to the human eye, creating a highly effective blackout screen. Opening the 10 cm-high slats provides complete, unobstructed visibility.





Before sliding the 20 mm thick panels, with a maximum height of 3.00 m and a width of 1.200 m, it is essential to ensure they are fully closed and locked. This process is accomplished using a sophisticated spring-loaded ratchet mechanism and a stainless steel eccentric shaft. All shafts and hardware used are stainless steel, with no visible screws, and they can be easily disassembled and reassembled. This makes them practical to transport and store in the event of a hurricane warning, without the need for a professional.

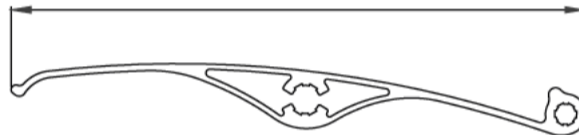




It offers a wide variety of materials in color for customizing the enclosure, allowing each design to be completely unique. Here are some examples of the colors available in our aluminum rails.

MOBILE BLADE

102,45



SLIDINGSCREEN FRAME FLAP



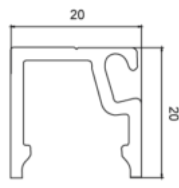
FIXED ALUMINUM BLINDS WITH SLATS



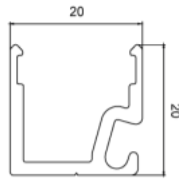
Our fixed tilt-and-turn blind system features curved extruded aluminum slats secured to a vertical U-shaped profile with stainless steel screws for firm stability, even in strong wind conditions. This configuration provides an elegant appearance and excellent protection from sunlight and water due to its tilted angle. The slats are 8 cm high, making them stylish, durable, and functional.

Additionally, our innovative system allows for the installation of a mosquito net if necessary. The fixed shutter panels are 20 mm thick and can reach up to 3,00 m in height and 1,200 m in width. They are easily removable, transportable, and storable in the event of a hurricane warning, without requiring expert assistance.

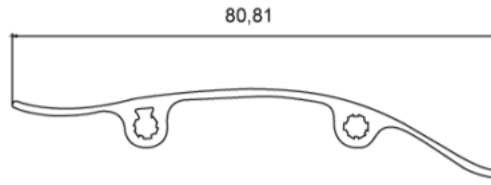
SIDE MOSQUITO NET PROFILE BLADE

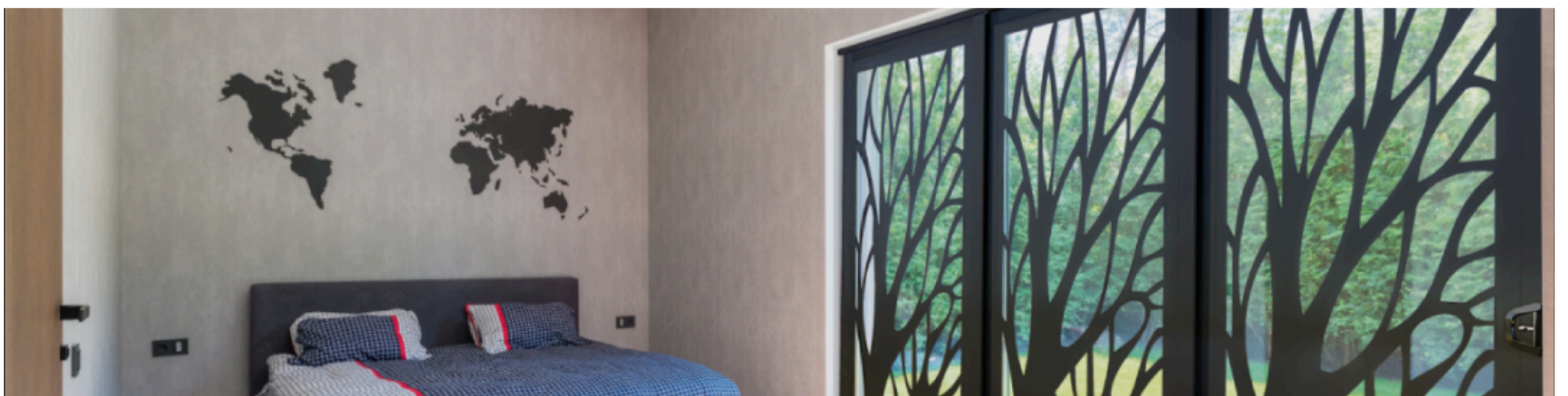


LOWER AND UPPER MOSQUITO NET PROFILE



FIXED BLADE





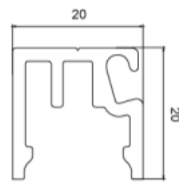


FIXED ALUMINUM BLINDS WITH SLATS

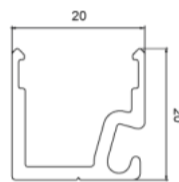
Our wood or aluminum slat blind system consists of 8 cm x 2 cm or 6 cm x 2 cm slats. These slats, made of extruded aluminum, natural wood, or engineered wood in a straight shape, are screwed to the panel using a vertical aluminum profile and two stainless steel screws to ensure stability.

This set provides excellent presentation, protection from sunlight, and privacy. The slats, measuring 8 cm and 6 cm in height respectively, offer perfect aesthetics with plenty of privacy, creating a warm atmosphere. Our innovative system also allows for the installation of a mosquito netting mesh according to preference. The slatted louver panels are movable and 20 mm thick, with a maximum height of 3.00 m by 1.200 m wide. Due to their size and weight, they are easy to remove and replace, and to transport and store in the event of a hurricane warning without the need for expert assistance.

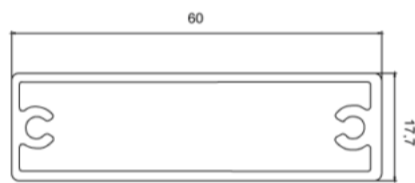
SIDE MOSQUITO NET PROFILE BLADE



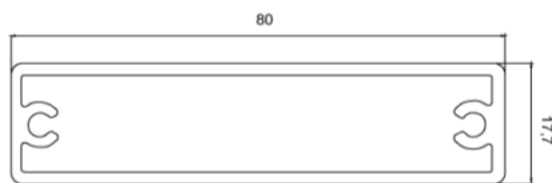
LOWER AND UPPER MOSQUITO NET PROFILE



The 60mm slat creates a 23-slat panel.



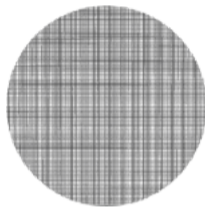
The 80mm slat creates a 17-slat panel.



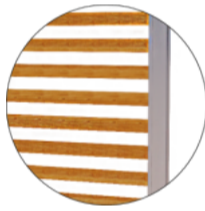




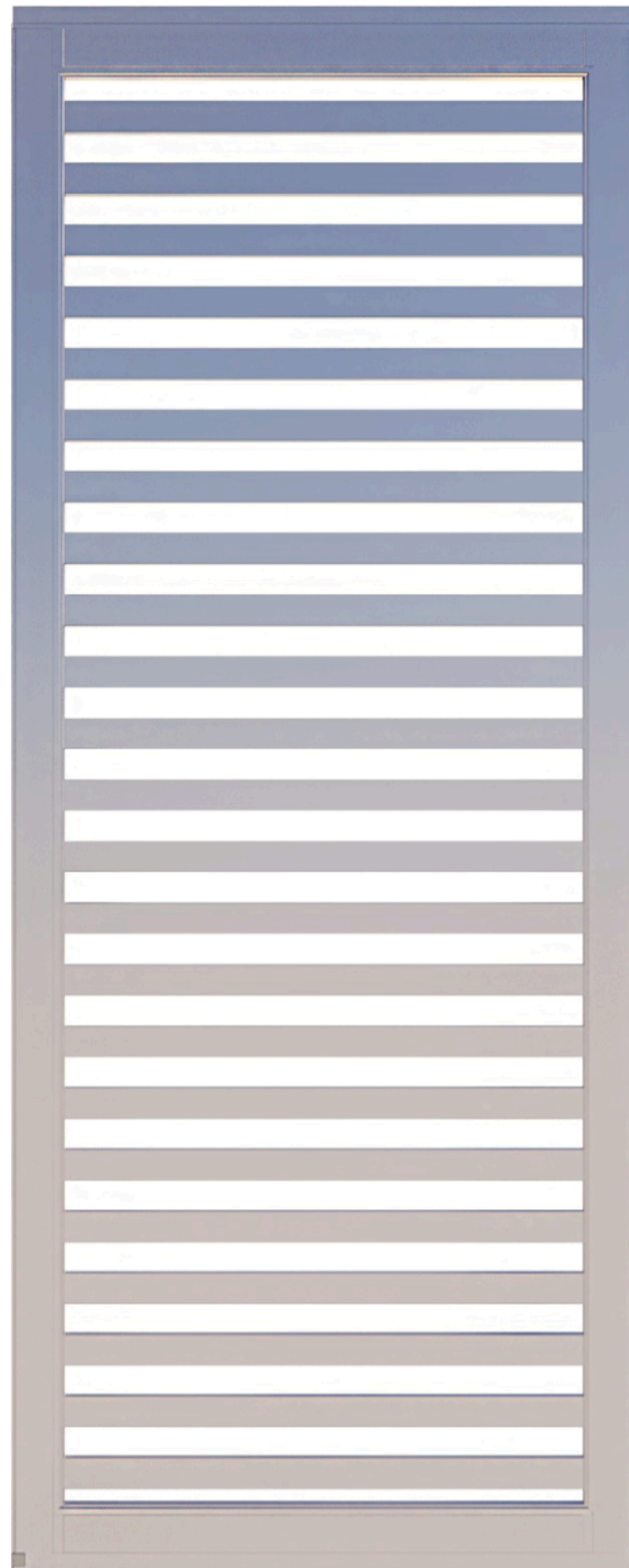
It offers a wide variety of materials in color for customizing the enclosure, allowing each design to be completely unique. Here are some examples of the colors available in our aluminum rails.



You can combine it with our mosquito net, adapting it to your needs.



You can choose whether your slats are made of aluminum, teak wood or synthetic wood.



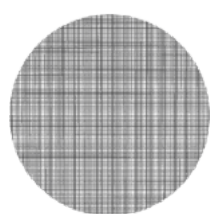
FIXED ALUMINUM BLINDS WITH LASER-CUT DESIGNS

We offer sliding and decorative panels with custom laser-cut aluminum slats. These panels provide sun protection and visual privacy. The extruded aluminum slats are attached to the sliding panel frame with stainless steel screws and a vertical aluminum profile, achieving an excellent appearance and a warm, elegant ambiance with sun protection and privacy. Mosquito netting can also be added as required. The slatted panels are movable and 20 mm thick, with dimensions up to 3,00 m high by 1,200 m wide. They are easy to disassemble, transport, and store in the event of a hurricane warning, without the need for professional assistance.





It offers a wide variety of materials in color for customizing the enclosure, allowing each design to be completely unique. Here are some examples of the colors available in our aluminum rails.



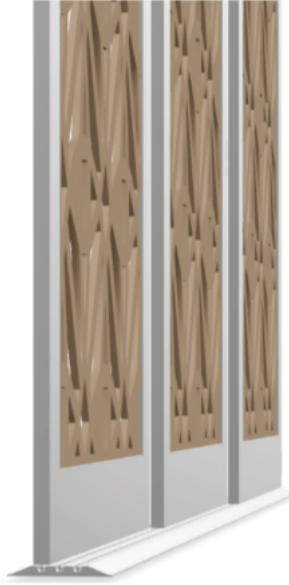
You can combine it with our mosquito net, adapting it to your needs.



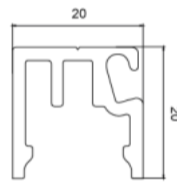
The design is completely customizable.



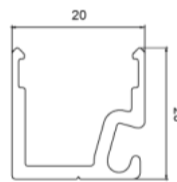
You can add a polycarbonate sheet, ideal for the winter season, as it acts as a thermal insulator.



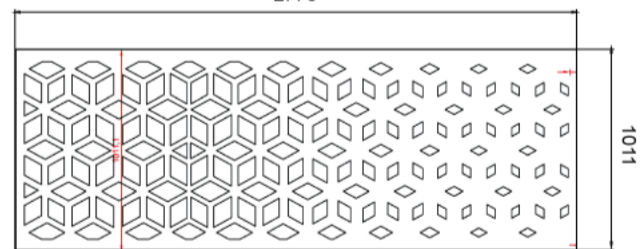
SIDE MOSQUITO NET PROFILE



UPPER AND LOWER MOSQUITO NET PROFILE



MOBILE BLADE
2776





FIXED ALUMINUM BLIND WITH MOSQUITO NET

We offer decorative textile panels that combine sun protection and mosquito netting. This netting is placed around the sliding aluminum frame using an innovative system with invisible plastic gaskets. We also offer the option of printing custom designs on the netting using digital printing. These decorative panels provide an excellent presentation, creating a warm and exclusive environment while protecting against sunlight and mosquitoes. The textile panels are mobile, 20 mm thick, and can reach up to 3.00 m high by 1.200 m wide. They are easily removable and transportable, which is practical in the event of a hurricane warning, without the need for professional assistance.

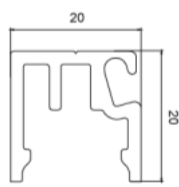




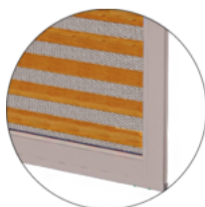
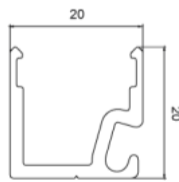
It comes in a wide variety of colors and designs, and we also offer the option of printing custom designs on the mesh, allowing it to perfectly adapt to your needs. You can also combine it with any design you like from our fixed panels. Here are some examples of the colors available in our textile panels:



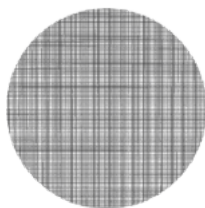
SIDE MOSQUITO NET PROFILE



UPPER AND LOWER MOSQUITO NET PROFILE



Combine it to your liking and according to your needs.



You have a variety of color and design options, and we even offer the option to print custom designs.

POLYCARBONATE PANEL WITH ARABESCO

We're introducing the polycarbonate panel, meticulously designed to complement the Sliding Screen, taking functionality and comfort to new heights. This innovative panel not only adds a layer of protection but also provides temperature control and noise reduction, ensuring a perfect environment in all seasons, even in winter. With its durability and transparency, it transforms your outdoor space into a comfortable and peaceful retreat, regardless of the weather. The innovative feature of this accessory is that the customer can install and remove it at any time thanks to the kit we provide with our perimeter enclosure.



SOUND CONTROL

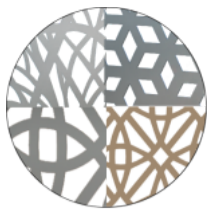


TEMPERATURE REGULATOR

4 MILLIMETERS THICK



Combine it to your liking and according to your needs.



Applicable in any of our available designs.

